

Mural artist ✨

Becci Shepherd

Originally from Carrbridge in the Highlands, I have had amazing opportunities to create murals all over Scotland so far.

Having studied Production Art and Design, and then a brief detour into primary school teaching, I adore creating big, publicly accessible pieces of art work that can inject some colour and creativity into spaces.

Murals are an incredible addition for any space, to brighten up and inspire kids bedrooms, to businesses sharing their values and boosting visitors.

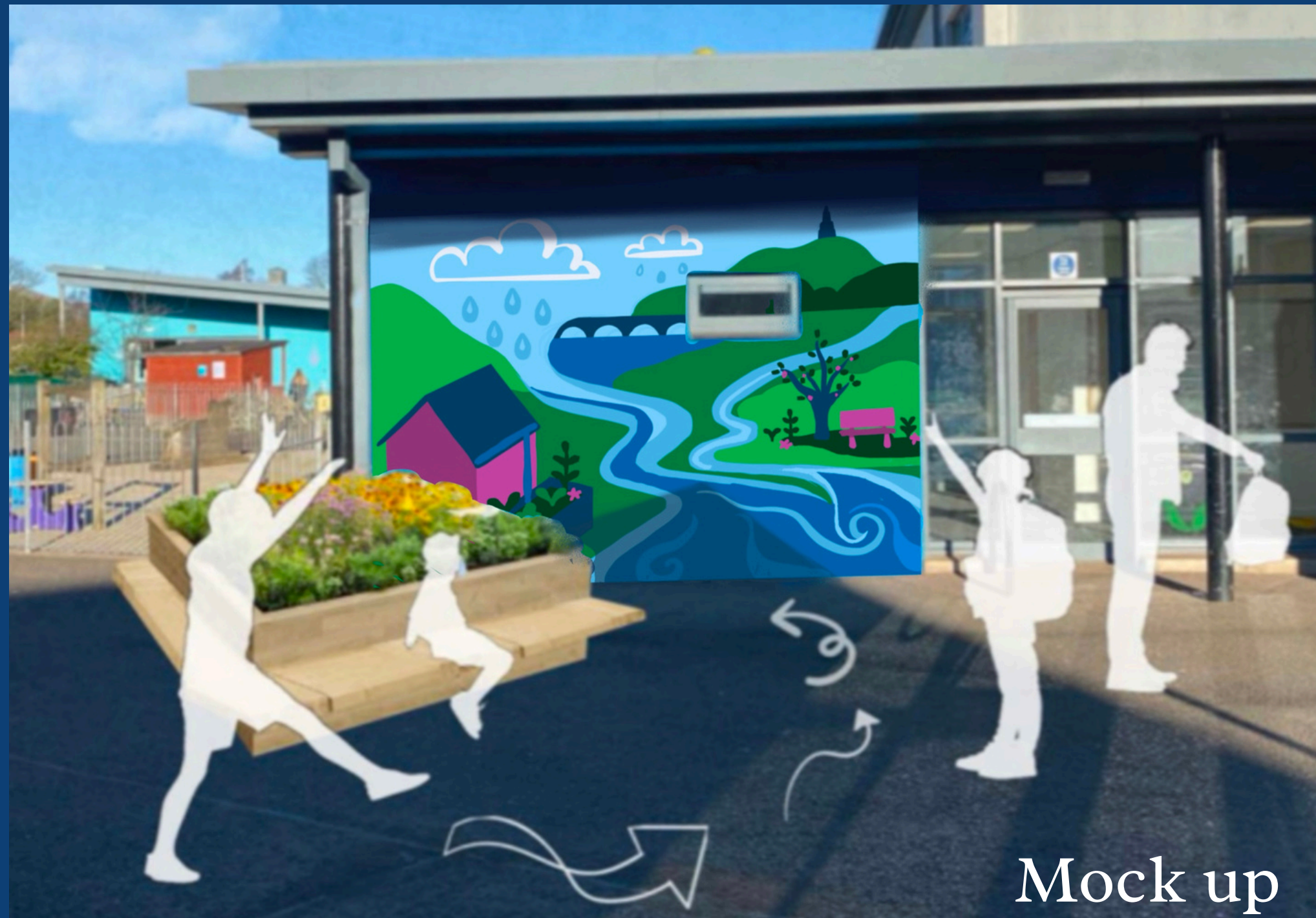


Water Resilient Dundee X Scottish Water

A project in collaboration with Water Resilient Dundee Schools Project and Scottish Water, encouraging young people in schools to use water sustainably and learn about the water cycle and its effects on the land around them.

Designed by Becci Shepherd in collaboration with Water Resilient Dundee
Painted by Becci Shepherd

Water Resilient Dundee X Scottish Water



Water Resilient Dundee X Scottish Water



Guinness Murals

Biddy Mulligan's - Scotsman Group

A pair of Guinness murals created for Biddy Mulligan's Irish pub in Edinburgh Grassmarket, distressed down to match the space.

Designs provided by Scotsman Group and adapted by Becci Shepherd, using old Guinness advertising
Painted by Becci Shepherd

Guinness Murals



Guinness Murals

Alleyway to Scotland's smallest pub

- hard to take photos of!



Contour wall mural project

Wall mural project using swirling greens, blue and complimentary pinks.
Overlapping contour lines and waves inspired by the landscape.

Designed and painted by Becci Shepherd

Contour wall mural project



Logos and corporate murals

Synchronicity Films

Three separate wall logos painted for Synchronicity films offices in Glasgow - 110cm, 320cm and 500cm long.

Logo provided by Synchronicity Films, painted by Becci Shepherd



Logos and corporate murals

Kin Pole Dance

Logo provided by Kin Pole Dance

Painted by Becci Shepherd



Other large scale projects

Faux corrugated dock doors created for Theatre production of City of Angels. Painted on flat Ply. 7.5 metres by 9 metres tall



Rose cut cloth for Opera Giulio Cesare

Other large scale projects



Portrait of Maria and sacred heart painted for Maria de Buenos Aries



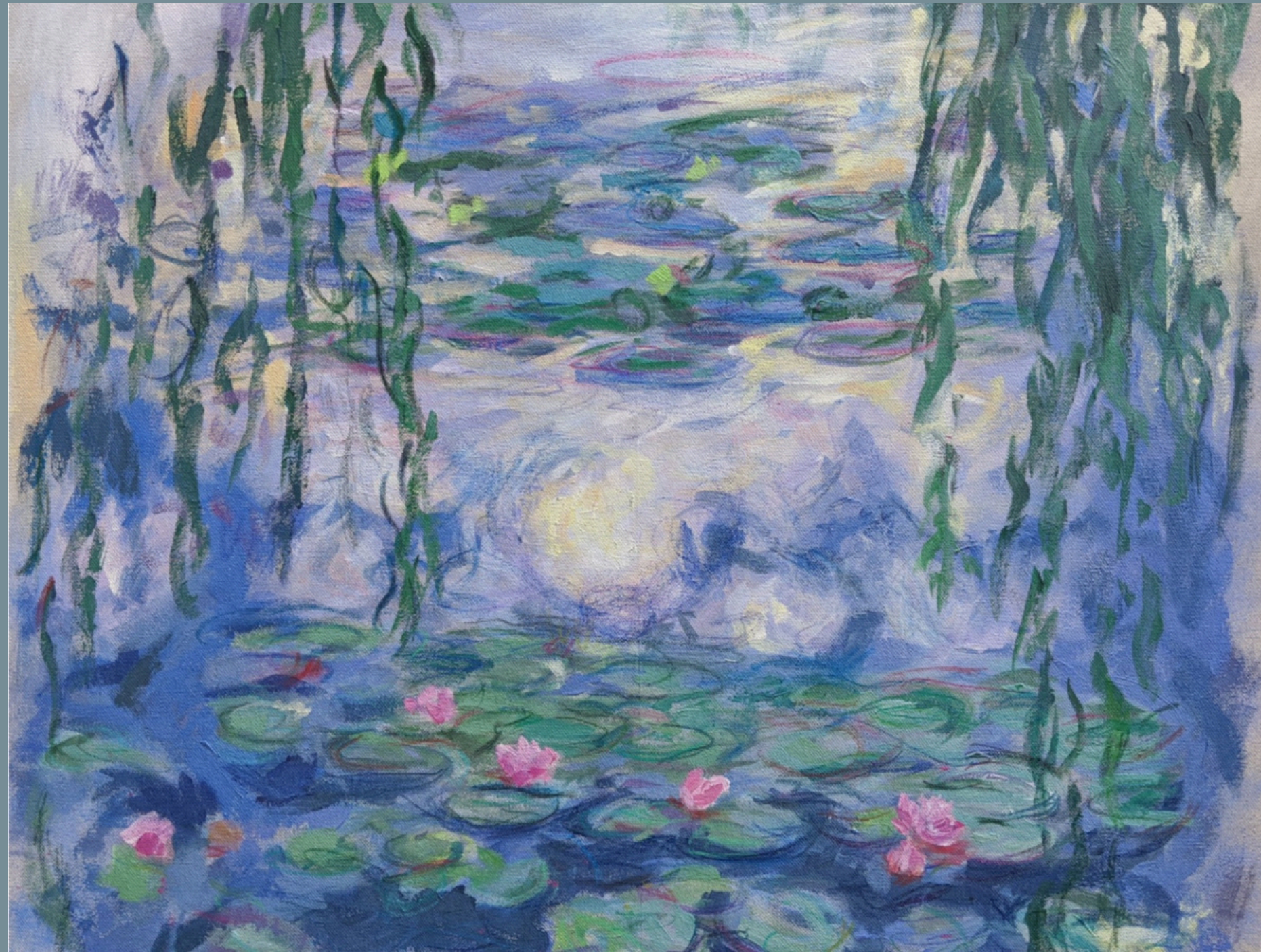
Other large scale projects



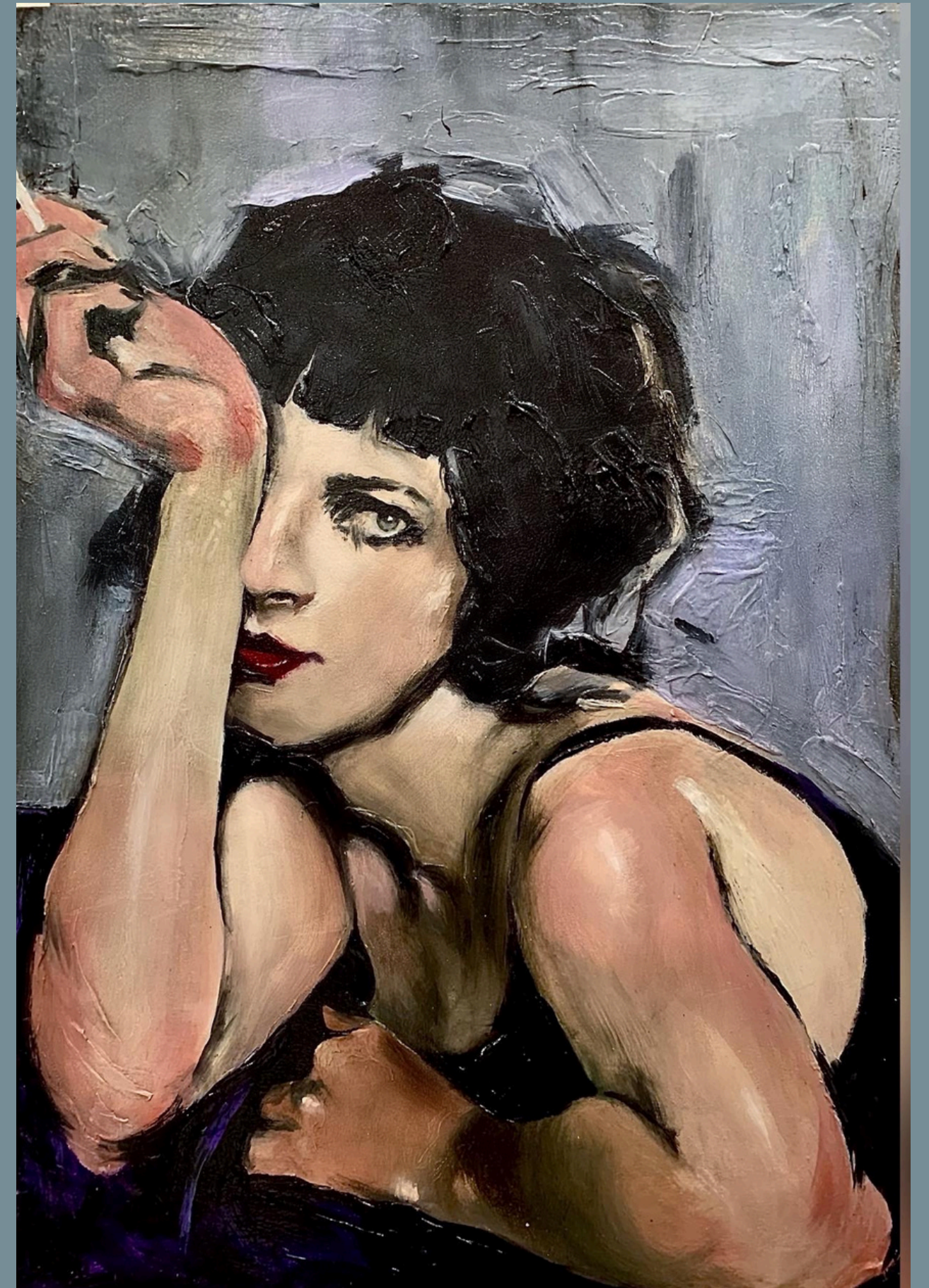
Backdrop for MacGregor and MacDuff Kiltmakers shop in central Glasgow

Coffee cup backdrop for theatre, painted using an airbrush and spraygun



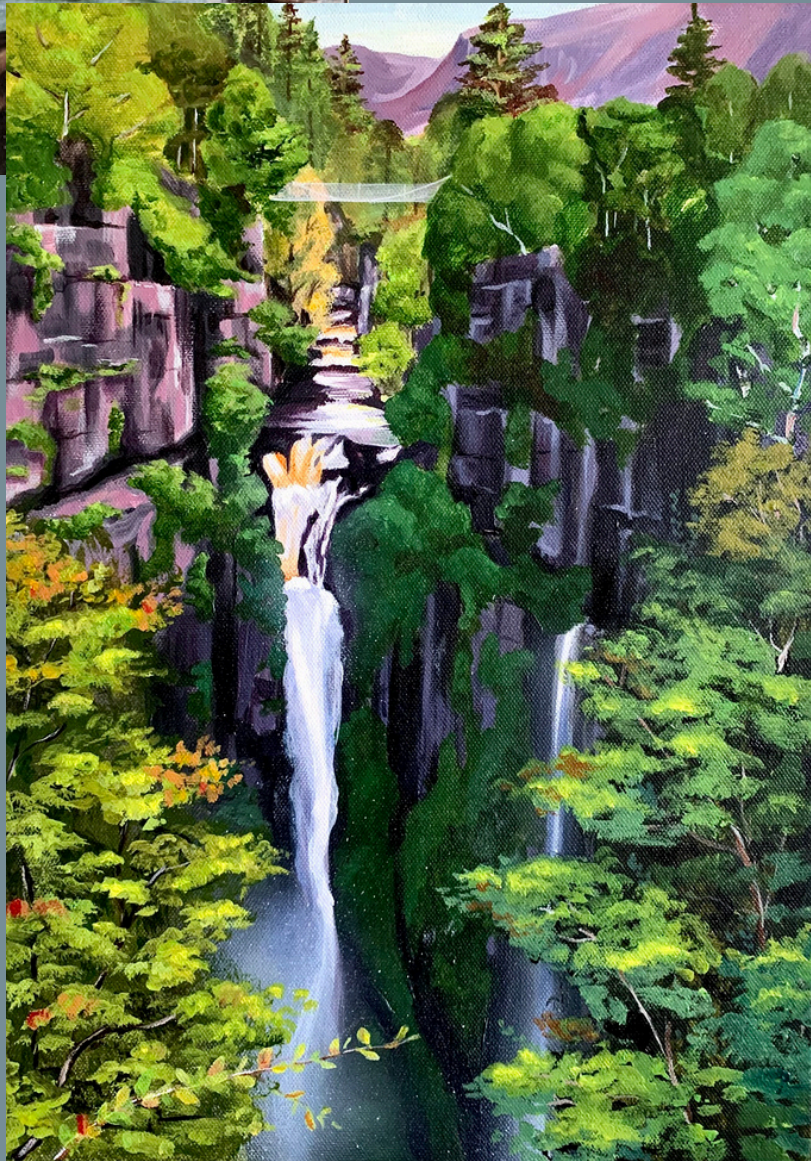


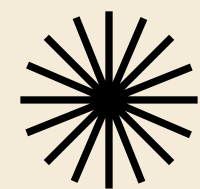
Recreations of famous paintings. Acrylic on canvas version of Monet's 'Water lillies', and Martin Liepke's 'End of the day' created using idenden, acrylic and gloss glaze.



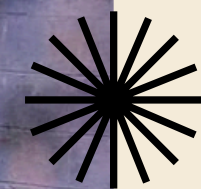
Fine Art

Original fine artwork. All pieces are acrylic on canvas.





GET IN TOUCH



Phone

07506166679

Email

beccishep@outlook.com

BECCI SHEPHERD

PRODUCTION ARTIST